

Come valuti il servizio dell'attività ambulatoriale e diagnostica?



69%  
4,416 resp.



12%  
744 resp.



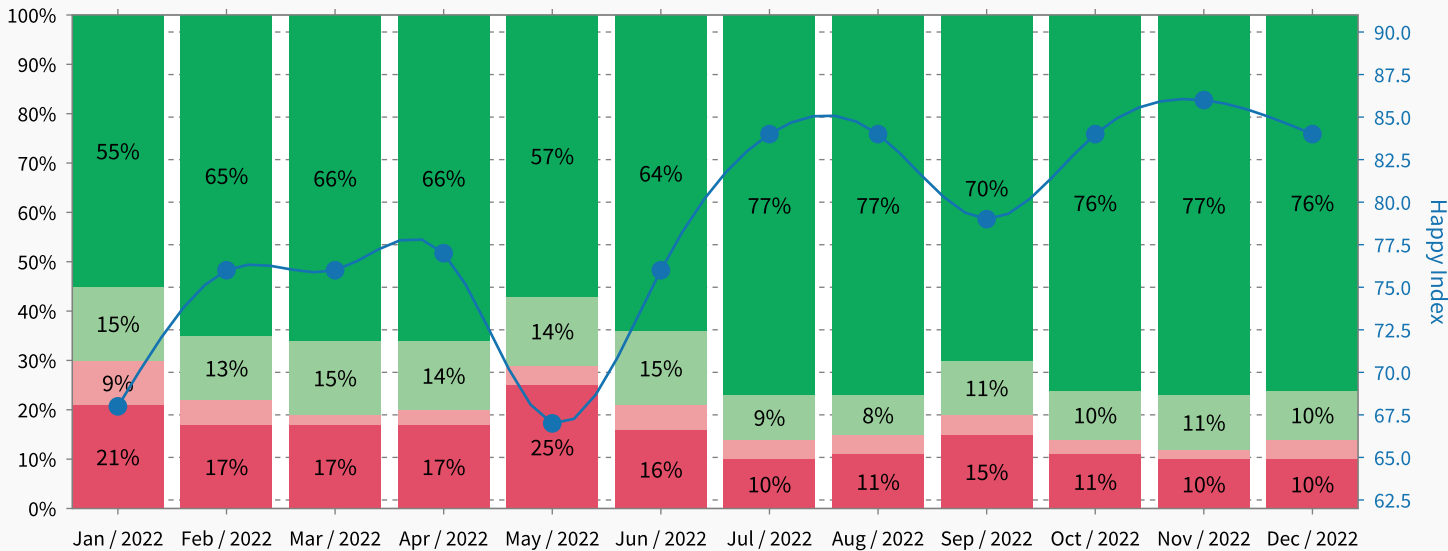
4%  
245 resp.



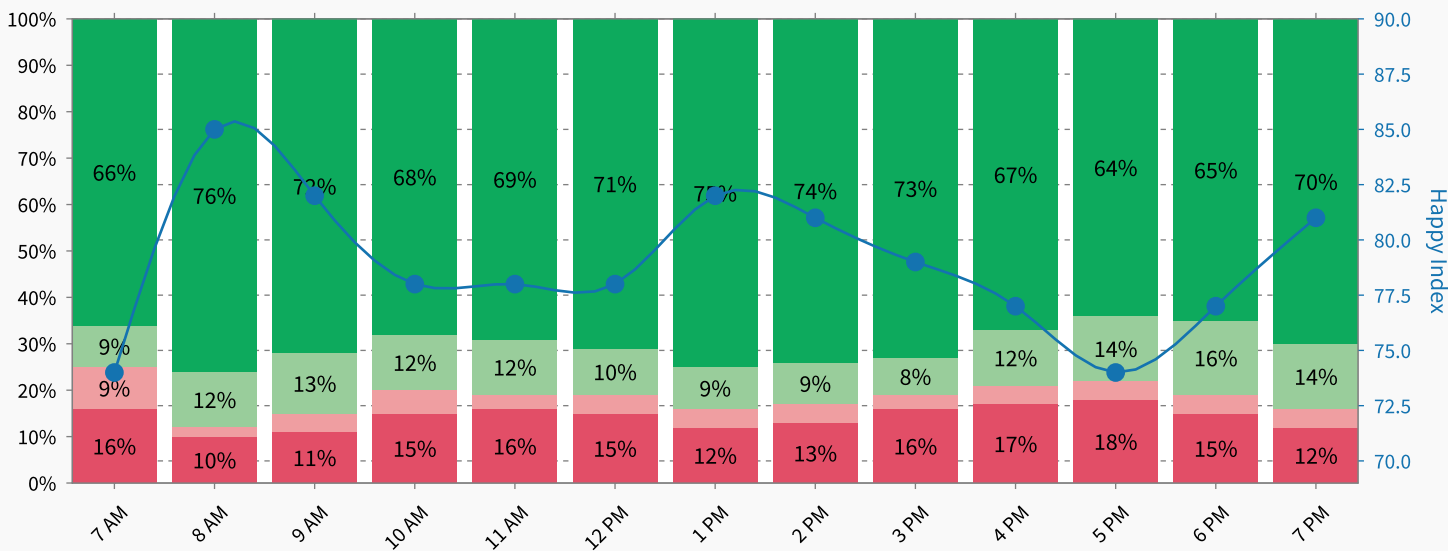
15%  
932 resp.

Happy Index: 79/100  
Responses: 6,337

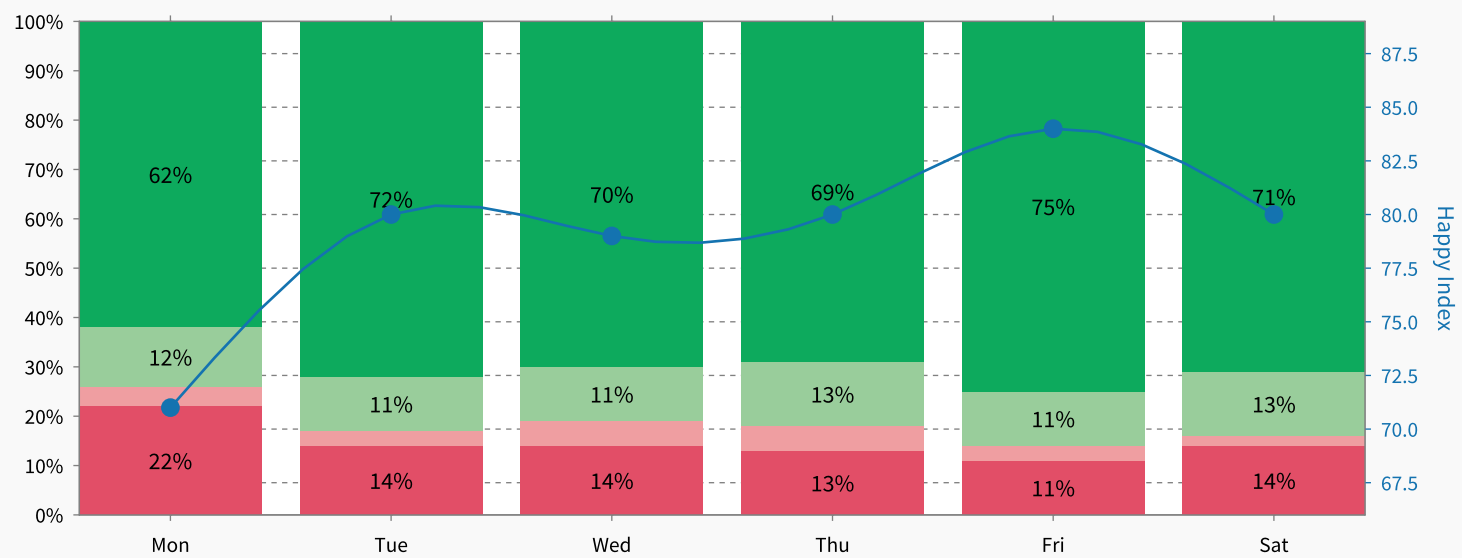
All units combined - monthly distribution



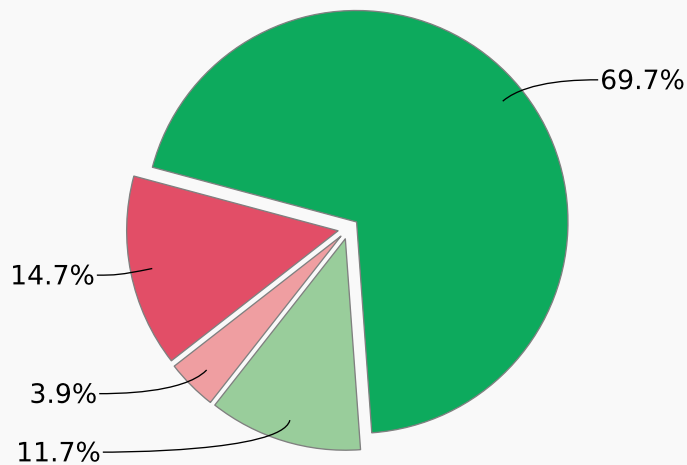
All units combined - hourly distribution



All units combined - weekday distribution



Total results



Pain Points

